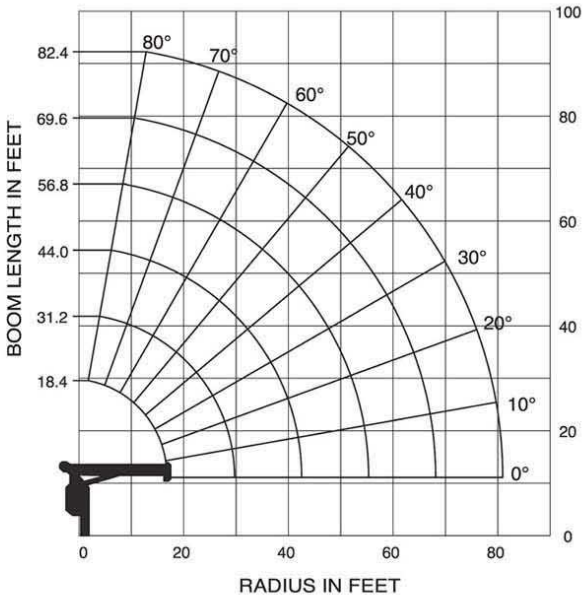


TM-1882 (18 ton) crane capacity

WORKING RANGE



The above lifting heights and boom angles are based on a straight (unladen) boom, and allowance should be made for boom deflection obtained under laden condition.

NOTE:

- 1) Rated lifting capacities on this chart show maximum allowable loads with outriggers properly extended on a firm surface and the crane leveled and mounted on a factory recommended truck. The rated lifting capacities in shaded areas are based on crane strength and others, on its stability (not to exceed 85% of tipping).
- 2) The weight of handling devices such as hook block, slings, etc., must be considered part of the load and must be deducted from the rated lifting capacities.
- 3) Weights of any accessories attached to the boom or loadline must be deducted from the rated lifting capacities.
- 4) The operator must reduce loads to allow for such factors as wind, ground conditions, operating speed and the effects of freely suspended loads such as boom deflection.
- 5) For full capacity 360° around the truck, the chassis requires the front stabilizer (ex. rear mounted) and additional counterweight in the underside of the bed.
- 6) For boom lengths or radius not shown, use the rated lifting capacity of next longer boom lengths or radius.
- 7) For boom lengths longer than 31.2 ft., extend outriggers to max. or mid.
- 8) For boom lengths longer than 56.8 ft., extend outriggers to max.
- 9) 56.8 ft. boom means 1st mark on 4th boom section side plate is half visible.
- 10) 69.6 ft. boom means 2nd mark on 4th boom section side plate is half visible.
- 11) Winch wire rope: diameter x length 9/16" x 279', breaking strength 30,100 lbs.
- 12) Keep at least 3 wraps of loadline on winch drum.
- 13) Maximum load for number of part lines is as shown below.
- 14) Part of lines are;

No. of part lines	1	2	4	5
Max. of load	7,200 lbs.	14,400lbs.	28,800lbs.	36,000lbs.

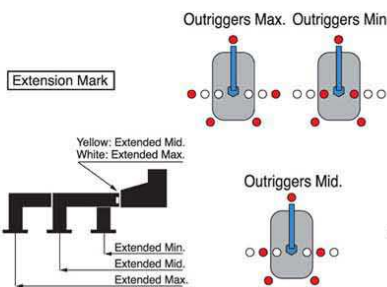
RATED LIFTING CAPACITY (IN POUNDS)

Load radius (ft.)	18.4 ft. Boom			31.2 ft. Boom			44 ft. Boom		56.8 ft. Boom		69.6 ft. Boom		82.4 ft. Boom		Load radius (ft.)	
	Loaded Boom Angle	Outriggers Extended			Loaded Boom Angle	Outriggers Extended			Loaded Boom Angle	Outriggers Extended		Loaded Boom Angle	Outriggers Extended			
		Max.	Mid.	Min.		Max.	Mid.	Min.		Max.	Mid.		Max.	Min.		
5	75°	36,000	30,000	22,000	76°	17,450	17,450	13,200							5	
8	64°	23,000	23,000	15,200	76°	17,450	17,450	8,750							8	
10	57°	19,350	19,350	10,100	73°	17,450	17,450		79°	17,450	17,450				10	
12	48°	16,550	16,550	7,400	69°	15,600	15,600	6,350	76°	14,650	14,650	80°	9,050	9,050	12	
14	38°	14,550	14,550	5,650	64°	13,650	13,650	4,800	73°	12,750	12,750	78°	9,050	9,050	14	
16	24°	13,000	12,700	4,500	60°	12,300	11,600	3,750	70°	11,500	11,000	76°	9,050	9,050	16	
20					51°	10,000	7,700	2,350	65°	9,400	7,700	72°	8,450	7,700	20	
25					36°	8,100	4,950	1,300	57°	7,600	4,950	66°	6,900	4,950	25	
30									48°	6,250	3,350	61°	5,650	3,350	30	
35									38°	5,050	2,400	54°	4,800	2,400	35	
40									23°	3,800	1,650	47°	3,800	1,650	40	
45												39°	3,400	1,150	45	
50												29°	2,700	900	50	
55													41°	2,300	55	
60													33°	2,000	60	
65													22°	1,600	65	
70														35°	1,350	70
75														28°	1,200	75
80														14°	850	80
	0°	8,400	8,400	4,050	0°	3,950	3,400	600	0°	1,850	1,300	0°	1,100	700		
		(16.89ft.)				(29.69ft.)				(42.48ft.)			(55.28ft.)			
													600			
													(68.07ft.)			
														350		
														(81.33ft.)		

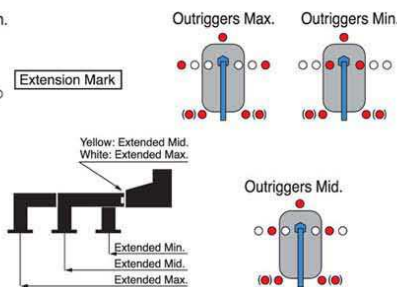
Notice : The chart is only for reference and should not be used for operation.

Maintain a clearances at least 10 feet between any part of the crane, load line or load and any electrical line carrying up to 50,000 volts. One foot additional clearance is required for every additional 30,000 volts or less.

<TRACTOR MOUNTED>



<CAB BACK MOUNTED>



<REAR MOUNTED>

