

**RADIUS IN FEET**

**NOTE:**

1. OPERATE WITH JIB BY RADIUS, WHEN MAIN BOOM IS FULLY EXTENDED. IF NECESSARY INCREASE BOOM ANGLE TO MAINTAIN LOADED RADIUS.
2. OPERATE WITH JIB BY BOOM ANGLE WHEN MAIN BOOM IS NOT FULLY EXTENDED. DO NOT EXCEED RATED JIB CAPACITIES AT ANY REDUCED BOOM LENGTHS.

**LOAD RATINGS**

LOAD RADIUS (FEET)	LOADED BOOM ANGLE	27FT BOOM (LBS)	LOADED BOOM ANGLE	42FT BOOM (LBS)	LOADED BOOM ANGLE	54FT BOOM (LBS)	LOADED BOOM ANGLE	66FT BOOM (LBS)	LOADED BOOM ANGLE	78FT BOOM (LBS)	LOADED BOOM ANGLE	90FT BOOM (LBS)	LOAD RADIUS (FEET)	LOADED BOOM ANGLE	27FT JIB (LBS)	LOADED BOOM ANGLE	48FT JIB (LBS)
5	79	46,000											30	77	4,800	79 1/2	3,100
8	72	32,300											35	74 1/2	4,300	77 1/2	2,900
10	67	26,700	76 1/2	23,500	80	22,000							40	72	3,650	75 1/2	2,700
12	62	22,800	73 1/2	20,500	77 1/2	18,800							45	69	3,000	73 1/2	2,500
14	57	19,800	70 1/2	17,700	75 1/2	16,400	79	15,200					50	66 1/2	2,450	71 1/2	2,300
16	51	17,400	67 1/2	15,700	73 1/2	14,500	77	13,300	79 1/2	12,400			55	63 1/2	2,000	69 1/2	2,100
20	37	13,800	61	12,700	68 1/2	11,700	73	10,800	76 1/2	10,000	79	9,500	60	60 1/2	1,600	67	1,800
25			52 1/2	10,100	62 1/2	9,400	68 1/2	8,700	72 1/2	8,000	75 1/2	7,600	65	57 1/2	1,300	64 1/2	1,500
30			43	8,250	56	7,800	63 1/2	7,100	68 1/2	6,500	72	6,100	70	54 1/2	1,000	62	1,250
35			30	6,550	49	6,400	58 1/2	6,000	64 1/2	5,450	68 1/2	5,100	75	51 1/2	750	59 1/2	1,050
40					41	5,400	53	5,100	60	4,650	65	4,400	80	48	500	57	850
45					31 1/2	4,400	47	4,400	55 1/2	4,000	61 1/2	3,800	85			54	650
50					17	3,100	40 1/2	3,650	51	3,500	57 1/2	3,250	90			51	450
55							32 1/2	3,000	45 1/2	3,000	53 1/2	2,800					
60							22	2,250	40	2,500	49	2,400					
65									33	2,050	44 1/2	2,050					
70									25	1,550	39 1/2	1,700					
75									11	700	34	1,350					
80											27	1,000					
85											17	500					

**LOADLINE EQUIPMENT DEDUCT**

- DOWNHAUL WEIGHT=150
- ONE SHEAVE BLOCK=200
- TWO SHEAVE BLOCK=355
- THREE SHEAVE BLOCK=530

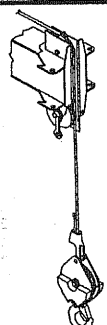

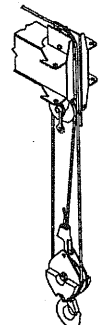

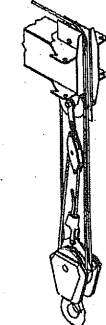
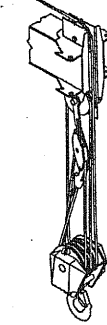
**NOTICE**

DO NOT DEADHEAD LINE BLOCK AGAINST BOOM TIP WHEN EXTENDING BOOM.

KEEP AT LEAST 3 WRAPS OF LOADLINE ON DRUM AT ALL TIMES.

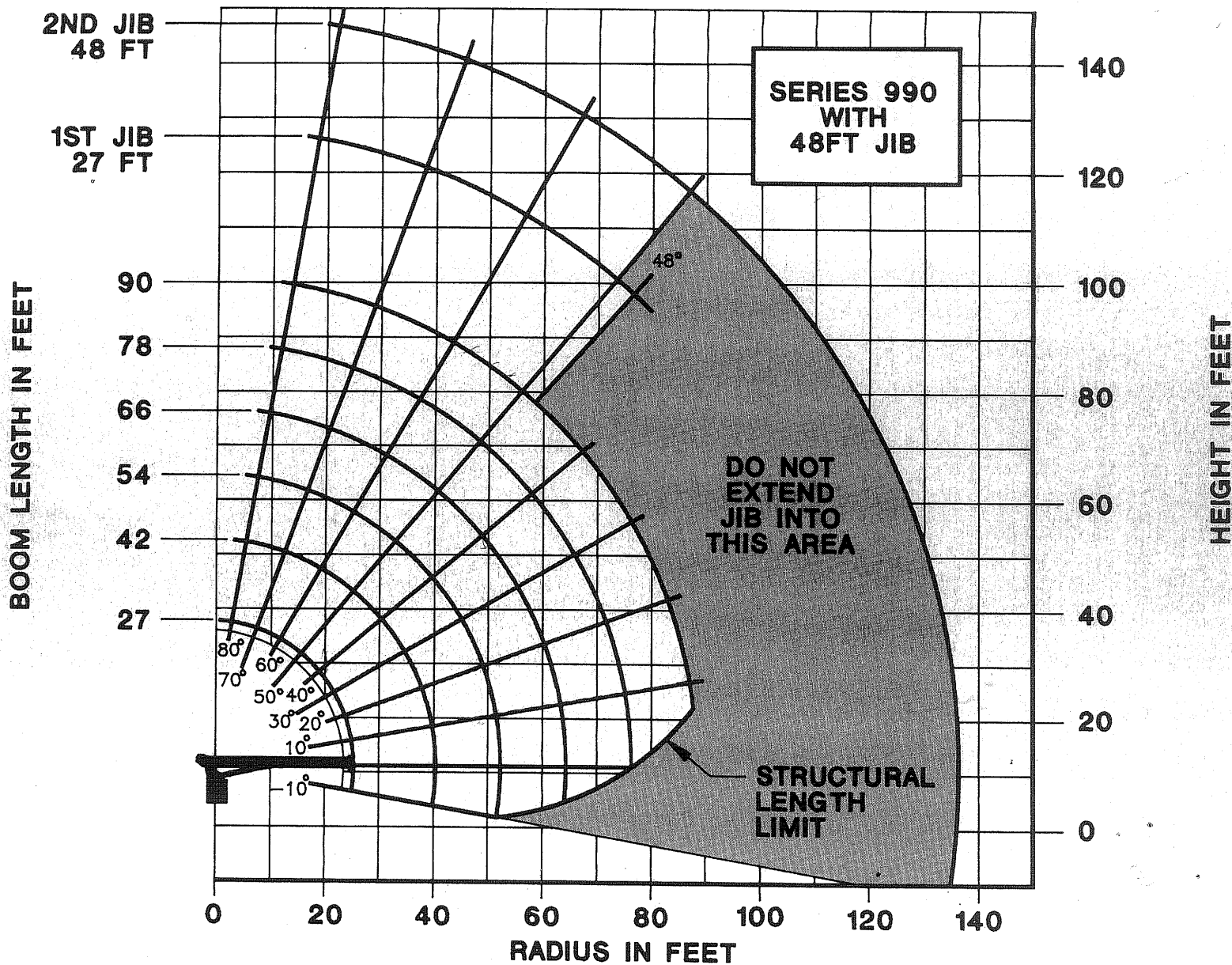
USE ONLY 9/16" DIAMETER ROTATION RESISTANT CABLE WITH 38,500 LBS BREAKING STRENGTH ON THIS MACHINE.

MAXIMUM CAPACITY WITH "BURST OF SPEED" IS 3,000 LBS.

1 PART LINE	2 PART LINE	3 PART LINE	4 PART LINE	5 PART LINE	6 PART LINE
					
MAX. PULL 7,700 LBS	MAX. PULL 15,400 LBS	MAX. PULL 23,100 LBS	MAX. PULL 30,800	MAX. PULL 38,500 LBS	MAX. PULL 46,000 LBS

# NATIONAL CRANE CORPORATION

875825



**NOTE:**

1. OPERATE WITH JIB BY RADIUS, WHEN MAIN BOOM IS FULLY EXTENDED. IF NECESSARY INCREASE BOOM ANGLE TO MAINTAIN LOADED RADIUS.
2. OPERATE WITH JIB BY BOOM ANGLE WHEN MAIN BOOM IS NOT FULLY EXTENDED. DO NOT EXCEED RATED JIB CAPACITIES AT ANY REDUCED BOOM LENGTHS.

**LOAD RATINGS**